

RUBBER INSULATION

Kingflex K0

**36 YEARS FOCUSED ON
INSULATION**

**12 YEARS TOP-SELLING BRAND
WORLDWIDE**

Since 1979®
KINGFLEX
Elastomeric Thermal Insulation Systems



HIGH-PERFORMANCE RUBBER INSULATION MATERIALS



WWW.KINGFLEX.SE

Product Specification

Product Specification

Kingflex K0 Tube -2M Length

Kingflex K0 Tube -2M Length

ID Inches	9mm -3/8"				13mm -1/2"				19mm -3/4"				25mm -1"				32mm - 1 1/4"				40mm - 1 5/8"			
	ID (mm)	Wall*ID	PCS/CTN	Wall*ID	PCS/CTN	Wall*ID	PCS/CTN	Wall*ID	PCS/CTN	ID (mm)	ID Inches	PCS/CTN	Wall*ID	PCS/CTN	Wall*ID	PCS/CTN	Wall*ID	PCS/CTN	Wall*ID	PCS/CTN	Wall*ID	PCS/CTN		
1/4"	6	9*6	168	13*6	90	19*6	50	19*6	50	6	1/4"	6	25*6	35	25*6	35	25*6	35	25*6	35	25*6	35		
3/8"	9	9*9	130	13*9	80	19*9	40	19*9	40	9	3/8"	9	25*9	25	25*9	25	25*9	25	25*9	25	25*9	25		
1/2"	13	9*13	115	13*13	65	19*13	40	19*13	40	13	1/2"	13	25*13	25	25*13	25	25*13	25	25*13	25	25*13	25		
5/8"	16	9*16	90	13*16	60	19*16	35	19*16	35	16	5/8"	16	25*16	20	25*16	20	25*16	20	25*16	20	25*16	20		
3/4"	19	9*19	76	13*19	45	19*19	30	19*19	30	19	3/4"	19	25*19	20	25*19	20	25*19	20	25*19	20	25*19	20		
7/8"	22	9*22	70	13*22	40	19*22	30	19*22	30	22	7/8"	22	25*22	20	25*22	20	25*22	20	25*22	20	25*22	20		
1"	25	9*25	55	13*25	40	19*25	25	19*25	25	25	1"	25	25*25	20	25*25	20	25*25	20	25*25	20	25*25	20		
1 1/8"	28	9*28	55	13*28	36	19*28	25	19*28	25	28	1 1/8"	28	25*28	18	25*28	18	25*28	18	25*28	18	25*28	18		
1 1/4"	32	9*32	40	13*32	30	19*32	20	19*32	20	32	1 1/4"	32	25*32	15	25*32	15	25*32	15	25*32	15	25*32	15		
1 3/8"	35	9*35	36	13*35	30	19*35	20	19*35	20	35	1 3/8"	35	25*35	15	25*35	15	25*35	15	25*35	15	25*35	15		
1 1/2"	38	9*38	32	13*38	24	19*38	17	19*38	17	38	1 1/2"	38	25*38	12	25*38	12	25*38	12	25*38	12	25*38	12		
1 5/8"	42	9*42	30	13*42	25	19*42	17	19*42	17	42	1 5/8"	42	25*42	12	25*42	12	25*42	12	25*42	12	25*42	12		
1 3/4"	45	9*45	26	13*45	20	19*45	16	19*45	16	45	1 3/4"	45	25*45	10	25*45	10	25*45	10	25*45	10	25*45	10		
1 7/8"	48	9*48	25	13*48	20	19*48	15	19*48	15	48	1 7/8"	48	25*48	13	25*48	13	25*48	13	25*48	13	25*48	13		
2 1/8"	54	9*54	25	13*54	20	19*54	15	19*54	15	54	2 1/8"	54	25*54	9	25*54	9	25*54	9	25*54	9	25*54	9		
2 1/4"	57	9*57	20	13*57	20	19*57	12	19*57	12	57	2 1/4"	57	25*57	9	25*57	9	25*57	9	25*57	9	25*57	9		
2 3/8"	60	9*60	18	13*60	18	19*60	14	19*60	14	60	2 3/8"	60	25*60	9	25*60	9	25*60	9	25*60	9	25*60	9		
2 5/8"	67	9*67	15	13*67	15	19*67	12	19*67	12	67	2 5/8"	67	25*67	8	25*67	8	25*67	8	25*67	8	25*67	8		
3"	76	9*76	12	13*76	12	19*76	10	19*76	10	76	3"	76	25*76	6	25*76	6	25*76	6	25*76	6	25*76	6		
3 1/2"	89	9*89	10	13*89	10	19*89	10	19*89	10	89	3 1/2"	89	25*89	8	25*89	8	25*89	8	25*89	8	25*89	8		
4 1/4"	108	9*108	8	13*108	8	19*108	8	19*108	8	108	4 1/4"	108	25*108	6	25*108	6	25*108	6	25*108	6	25*108	6		
4 1/2"	114	9*114	8	13*114	8	19*114	8	19*114	8	114	4 1/2"	114	25*114	2	25*114	2	25*114	2	25*114	2	25*114	2		

ALUMINIUM FOIL AND SPECIAL SIZES AVAILABLE

Kingflex K0 Roll Sheet

Thickness		Sheet 1 meter wide		Sheet 1.2 meter wide		Sheet 1.5 meter wide	
Inches	mm	Size (L×W)	m ² /Roll	Size (L×W)	m ² /Roll	Size (L×W)	m ² /Roll
1/4"	6	30 × 1	30	30 × 1.2	36	30 × 1.5	45
3/8"	10	20 × 1	20	20 × 1.2	24	20 × 1.5	30
1/2"	13	15 × 1	15	15 × 1.2	18	15 × 1.5	22.5
3/4"	19	10 × 1	10	10 × 1.2	12	10 × 1.5	15
1"	25	8 × 1	8	8 × 1.2	9.6	8 × 1.5	12
1 1/4"	32	6 × 1	6	6 × 1.2	7.2	6 × 1.5	9
1 1/2"	40	5 × 1	5	5 × 1.2	6	5 × 1.5	7.5
2"	50	4 × 1	4	4 × 1.2	4.8	4 × 1.5	6

⊙ ALUMINUM FOIL, SELF-ADHESIVE AND FLAT SHEET AVAILABLE

BS476 / UL 94 / ASTM-E84 / BV / ISO9001

Accessories

Product	Model
Rubber Foam Tape	
King-520 Glue	
Aluminum Tape	

Company Introduction

Mission Statement

"More comfortable life,
more profitable
business through
energy
conservation"

Kingflex In Action

Growth in the construction industry and many other industrial segments, combined with concerns over rising energy costs and noise pollution, is fueling market demand for thermal insulation. With more than 36 years of dedicated experience in manufacturing and applications, Kingflex Insulation Company is riding on top of the wave.

Global Footprint

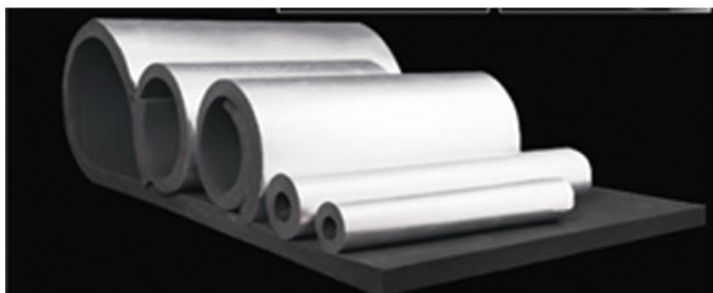
Over three decades, Kingflex Insulation Company has grown from a single manufacturing plant in China to a global organization with product installation in over 50 countries. From the National Stadium in Beijing, to the high rises in New York, Singapore and Dubai, people around the world are enjoying the quality products from Kingflex.

About Kingflex K0

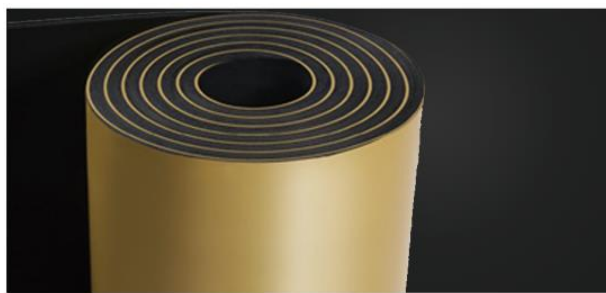


Kingflex K0 product is ideally designed with an excellent fire and safety insulation performance according to the market demand. Kingflex adopts unique micro foaming technology. Product cells are uniform and fine, have excellent heat preservation, heat insulation performance, and higher safety fireproof performance. Kingflex K0 series product has passed the test of BS 476 part 6 part 7 (Class 0). It has achieved the highest fire certification of BS standard. It has reached the highest safety standards for fireproofing in the world, bringing higher security for users.

- 🎯 To reach better performance, Kingflex K0 products can be also faced with aluminum foil.



- 🎯 For easy installation, Kingflex K0 products with adhesive are also available.



Kingflex K0 Technical Data

Property	Unit	Value	Test Method
Temperature Range	°C	-50-110	GB/T 17794-1999
Density Range	Kg/m ³	45-65	ASTM D1667
Water Vapor Permeability	Kg/(m.s.pa)	$\leq 0.91 \times 10^{-11}$	DIN 52 615 BS 4370 Part 2 1973
μ	-	≥ 12000	
Thermal Conductivity	W/(m.k)	≤ 0.029 (-20°C)	BS 874 Part2 1986 ASTM C518 DIN 52612, DIN52613
		≤ 0.031 (0°C)	
		≤ 0.036 (40°C)	
Combustion Performance		Class 0	BS 476 Part 6 part 7
		V O	UL 94
		Class A	ASTM-E84
Total Index Flame Spread		$I \leq 12$	BS 476 Part 6
Sub-index Flame Spread		$i_1 \leq 6$	BS 476 Part 6
Oxygen Index	%	$KO \geq 40$	GB/T 2406, ISO4589
Dimension Stability	%	≤ 5	ASTM C534
Fungi Resistance	-	Good	ASTM 21
Ozone Resistance	-	Good	GB/T 7762-1987
Resistance to U.V. And Weather	-	Good	ASTM G23

Application

Ventilation pipe, large pipe facilities, tubing, HVAC, solar water heaters, freezers, dual temperature low pressure steam pipeline, pipeline, offshore and coastal facilities and ship industry, ships, locomotives etc.



Airport



Subway Station



Stadium

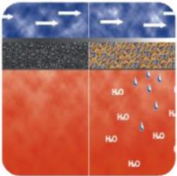
12 YEARS TOP-SELLING BRAND WORLDWIDE

Product Performance Advantages



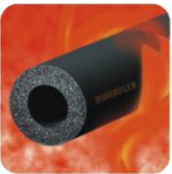
Good Thermal Insulation Property

High-performance Kingflex K0 product with suitable apparent density and stable closed cell structure creates the lowest and the most stable thermal conductivity. It(λ) can reach 0.029w/m.k at -20°C.



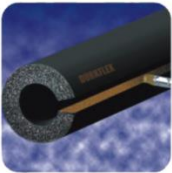
Excellent Water Vapor Permeability

High-performance Kingflex K0 product with perfect closed cell structure bring low water absorption and high moisture resistance factor- μ . μ value fully promote up to 12000 in the industry-leading.



Safety

High-performance Kingflex K0 product is different from the out-dated technology with small closed cell structure. It can better control balance of the oxygen index and smoke density with foaming chemical reaction fully.



Easy Installation

Different from the excessively pursuit low density material, High-performance Kingflex K0 product has high tear strength, It can prevent surface damage. Meanwhile,compare with the high density material, Kingflex is more flexible,and easier to install, The joint is not easy to rebound and gap.



- Protect Environment
- Save Operating Cost
- Increase Process Efficiency
- Reduce Fire Risk
- Protect Workforce
- Improve Appearance of Equipment and Pipe etc.



UL94



FOLLOW-UP SERVICE

QUALITY REVIEW



INTERNATIONAL
Standards Worldwide

ASTM-E84



UKAS
UNITED KINGDOM
ACCREDITATION
SERVICE

UKAS



GREEN PRODUCT



BS476



BV APPROVED



2Flow AB

kundtjanst@2flow.se

0451-223 00